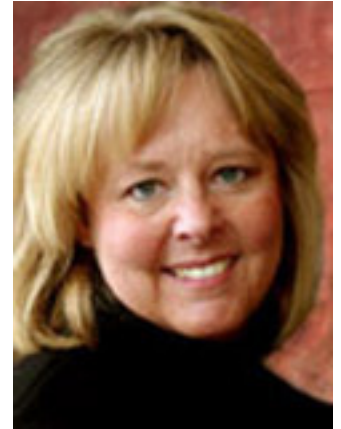


# Suzanne Accetta

Suzanne Accetta has been drawing and painting for over thirty years. Suzanne earned a Bachelor of Fine Arts from the University of Cincinnati. Her interest in figures prompted her to become a student of internationally famed portrait artist Everett Raymond Kinstler.

Suzanne works primarily in watercolor, however her work in oil, acrylic and colored pencil is outstanding. In all her art, she emphasizes character, expression, and feeling. Suzanne has earned a reputation in the field of portrait painting as well as an emotional and sensitive approach to her work in general. Calvin J. Goodman writes in the July, 1989 issue of *AMERICAN ARTIST MAGAZINE*, "Accetta tries to employ some narrative elements in every painting. She is a keen student of faces and human anatomy. As a result, her work shows great empathy for her subjects."



Suzanne 's paintings are exhibited in many private and corporate collections from New York to Australia. The Berol Corporation, manufacturers of Prismacolor pencils uses her colored pencil drawings to illustrate their product. Suzanne's work has been accepted and honored in numerous local and national exhibitions. She was featured in the January, 1991 issue of *AMERICAN ARTIST MAGAZINE* and in the book *THE COMPLETE COLORED PENCIL BOOK*. Suzanne has had her paintings and illustrations published nationally and she has illustrated children's books for Continental Press as well as an independent author. Her biography is included in *WHO'S WHO IN AMERICAN ART*. Suzanne is a much sought after lecturer, demonstrator, juror, and teacher.

Suzanne has also gained a reputation as a critically acclaimed theatrical set designer and director. She finds the principles in visual art easily apply to the theatre venue. She designed her first professional set, which was critically acclaimed, for the *Secret Garden* at Columbus Children's Theatre. Suzanne made her professional directing debut with the musical CCT's *Snoopy*. Other directing and designing credits include *The Velveteen Rabbit*, *Charlie and the Chocolate Factory*, *Sound of Music*, *Joseph and the Amazing Technicolor Dreamcoat*, *Peter Pan*, *Honk, You're a Good Man Charlie Brown*, *Godspell*, *Once Upon a Mattress*, and *The Hobbit*. She presently teaches in the Theatre and Dance Department at Otterbein College. Suzanne has had her illustrations published nationally and she has illustrated children's books for Continental Press.

Suzanne Accetta  
e-mail SUZACC@aol.com  
Website: [www.suzanneaccetta.com](http://www.suzanneaccetta.com)

---

## Suzanne Accetta African Rhythms in Paint

May 12 - June 30



homeport  
GALLERY

Artist's Reception, June 4, 2011, 6-8pm  
**Gallery Hours: Th - Sun, 12pm - 6pm, and by appt.**

779 E. Long St., Lincoln Theatre building, Columbus, OH | [homeportohio.org/gallery](http://homeportohio.org/gallery)

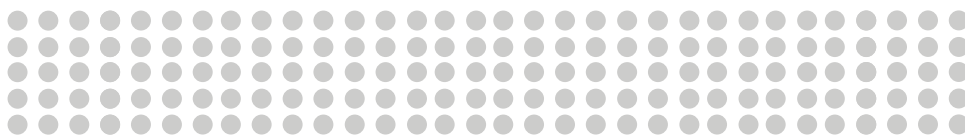
# Suzanne Accetta Price List

1. <i>Keepers</i>	\$1500
2. <i>Diola Harvest</i>	\$1500
3. <i>Still Standing</i>	\$1800
4. <i>Drum en Femme</i>	\$1600
5. <i>Legacy Carrier</i>	\$1700
6. <i>Balanta Swirl</i>	\$1600
7. <i>Mirror to Thee</i>	\$1500
8. <i>Hidden Strength</i>	\$1500
9. <i>Kotebah</i>	\$1600
10. <i>Baobab Beginnings</i>	\$1600
11. <i>Unspeakable Joy</i>	\$1500
12. <i>Djembe Junior</i>	\$1700
13. <i>Pulse Balanta</i>	\$1800
14. <i>What She Said</i>	\$1500
15. <i>Silent Strength</i>	\$1700
16. <i>Life Carrier</i>	\$1500
17. <i>Life Celebration</i>	\$1500
18. <i>Balanta Beauty</i>	\$1500
19. <i>Sincerely</i>	\$900
20. <i>Village Mother</i>	NFS
21. <i>Legend</i>	NFS

---

## Suzanne Accetta African Rhythms in Paint

May 12 - June 30



homeport  
GALLERY

Artist's Reception, June 4, 2011, 6-8pm

Gallery Hours: Th - Sun, 12pm - 6pm, and by appt.