

The Felix Traditional single family

1327 Lee Ave, Columbus, OH 43219



Photo of a similar model.

Description

Experience the classic charm of this new build Cape Cod home tucked away in a quiet neighborhood just north of Central Columbus with easy access to downtown. The design includes a first-floor master bedroom with a private bath, Energy Star appliances, beautiful tile floors, great room, large finishable basement, and two bedrooms and full bath on the second floor. Special financing and down payment assistance may be available to qualified buyers. Built to AWARE standards - which offer a healthy, environmentally friendly home.



american addition

\$117,000*

Bedrooms:	3
Full Baths:	2
Half Baths:	1
Interior:	1,595 Sq. Ft.
Property Type:	Single Family Home
Built:	2012

Amenities

- 2-Car Detached Garage
- Energy Star Appliances†
- 1st Floor Laundry
- 1st Floor Master Bedroom
- AWARE Design Features
- Tile Floors



*List price is based on buyer's eligibility with City's grant programs.

†To be installed at closing.

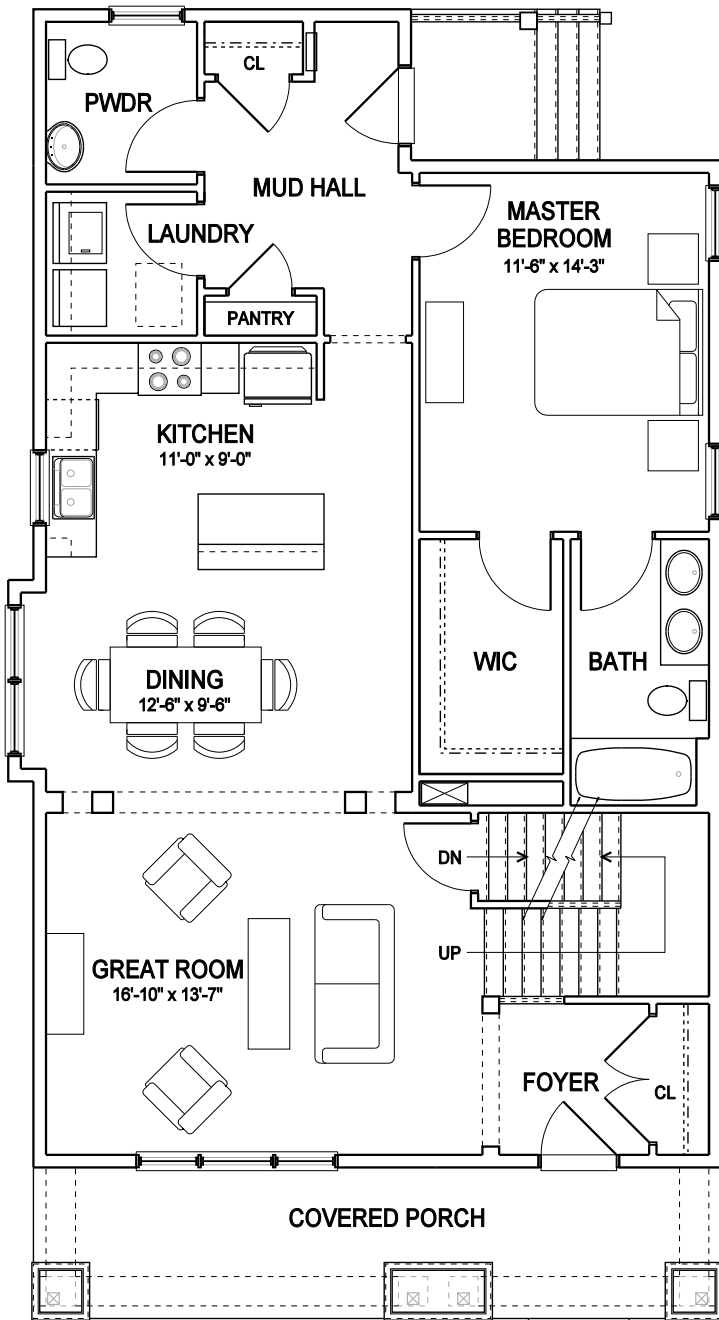


Call 614-545-4827

to discuss this or other properties with
Angela Printup, Sales Coordinator

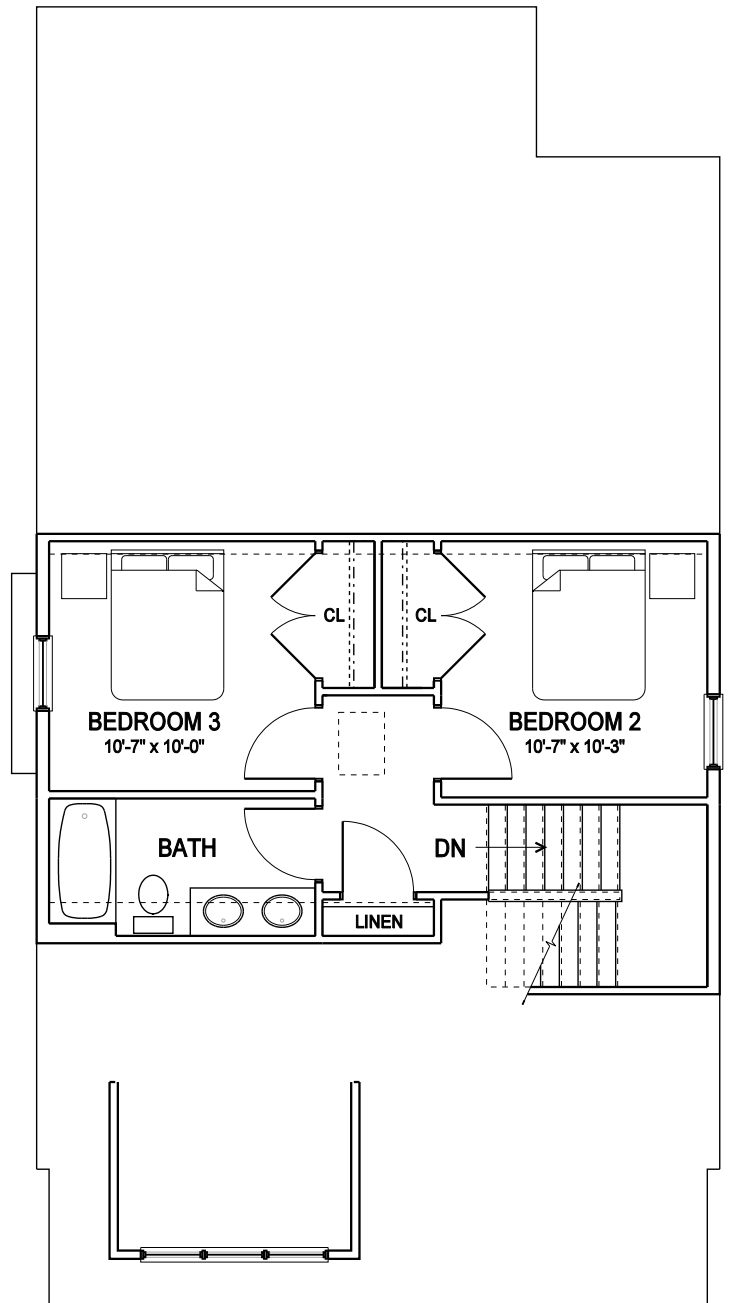
homeport

Home Ownership
by Columbus Housing Partnership



1ST FLOOR

1,203 S.F.



2ND FLOOR

392 S.F.



Photo of a similar model.



Photo of a similar model.



Photo of a similar model.

The drawings and written material appearing herein constitute an original and unpublished work of Homeport and the same may not be duplicated, used or disclosed without the written consent of Homeport. Homeport reserves the right to change, revise, delete and/or substitute product features, dimensions, specifications, architectural details and designs without notice. This brochure is not a legal document and is for illustration purposes only.

Products are developed and built by Homeport or by affiliates of Homeport.

